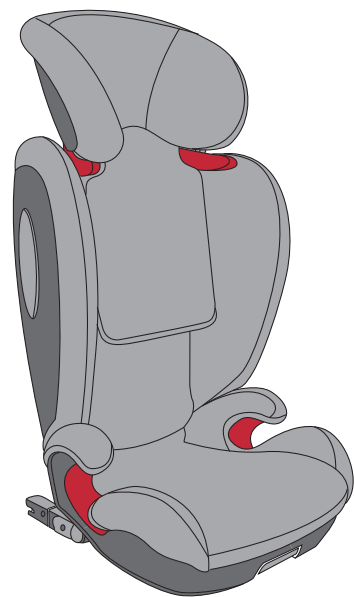




Star-Fix USER MANUAL

100cm-150cm
 4-12years
UNECE regulation no. R129

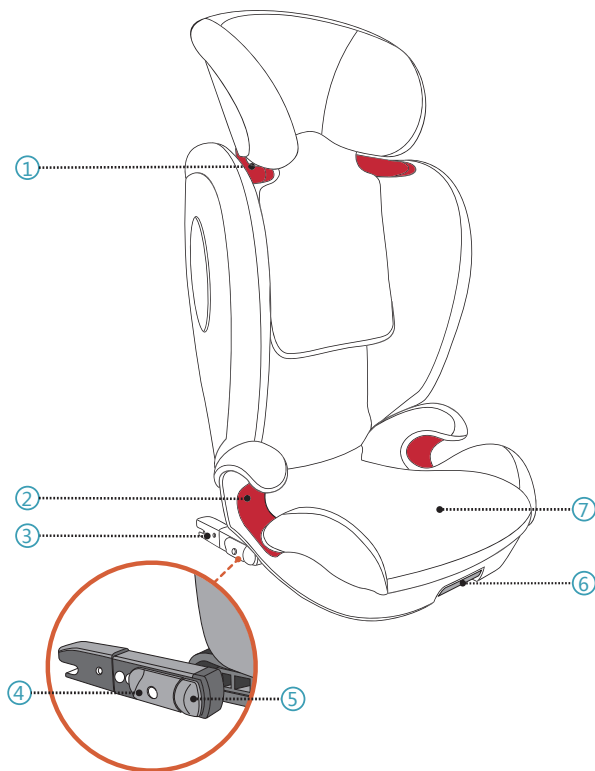


GB

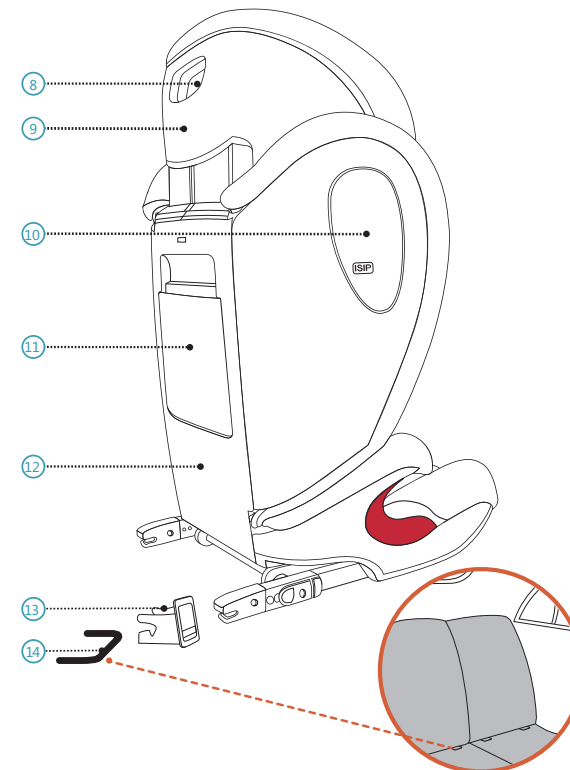
5101224 18/09

Made in Germany

1 PRODUCT OVERVIEW



- | | |
|--------------------------|----------------------------|
| 1. Shoulder belt guide | 5. ISOFIX indicator button |
| 2. Lap belt guide | 6. ISOFIX release handle |
| 3. ISOFIX connector | 7. Seat cushion |
| 4. ISOFIX locking button | |



- | | |
|---------------------------------------|--|
| 8. Headrest adjustment handle | 12. Backrest |
| 9. Headrest | 13. ISOFIX insertion guide |
| 10. Integrated side impact protection | 14. ISOFIX anchoring points (automobile) |
| 11. User manual compartment | |

2 INTRODUCTION

Thank you for choosing AVOVA Star-Fix to ensure your child's safe journey. The seat has been designed, tested and certified according to the requirements of the Enhanced Child Restraint Systems (ECE R129), as a specific vehicle booster seat. The seal of approval E (in a circle) and the approval number are located on the orange approval label (a sticker on the child seat). The child seat is designed for a child with stature of 100cm-150cm approximately 4 to 12 years old. When used for statures between 135cm and 150cm Star-Fix might not fit in all vehicles, due to a low position of the vehicle roof at the side of the chosen installation position. It is important that you read this user manual BEFORE installing your seat. Incorrect installation and/or misuse of the seat could endanger your child. This user manual should be kept to hand in the child seat user manual compartment 11 at all times.

The following symbols are used in this user manual:

⚠ DANGER DANGER indicates a hazardous situation which, if not avoided, will result in death or serious injury.

⚠ WARNING WARNING indicates a hazardous situation which, if not avoided, could result in death or serious injury.

⚠ CAUTION CAUTION indicates a hazardous situation which, if not avoided, could result in minor or moderate injury.

GENERAL SAFETY INFORMATION

⚠ DANGER AVOVA Star-Fix is approved for statures of 100cm – 150cm, in the forward-facing direction.

⚠ DANGER When the child is taller than 150cm or the child's shoulders exceed the highest position of the shoulder belt guide, the child must change to a seat which is suitable for taller children, that could be a vehicle seat.

⚠ WARNING For the suitable positions in the car, please read your vehicle handbook.

⚠ WARNING Compatible with universal seating positions in vehicles. Please read your vehicle handbook.

⚠ DANGER Never leave your child unattended in the child seat.

⚠ DANGER Never secure your child or the child seat with a 2-point belt as that may cause serious injuries or death in the event of an accident.

⚠ WARNING The child seat must always be secured when it is in the vehicle, even if no child is being transported, by using ISOFIX anchoring points 14 or vehicle belt when used in a vehicle that has no ISOFIX anchoring points.

⚠ WARNING The child seat needs to be checked regularly to ensure all the parts are functional and free from any damages.

⚠ DANGER Please dispose of your seat in the event of any vehicle and/or violent collision as the child seat may be damaged but the damage may not be immediately visible.

⚠ DANGER No modifications, lubrications and/or part changes can be done to the child seat. Only AVOVA is permitted to perform any modifications or part changes to the child seat.

⚠ WARNING Please do not expose the child seat under intensive direct sunlight. Under intensive direct sunlight, the child seat or some of the child seat parts can get very hot which can cause harm to the child.

⚠ DANGER The backrest may tip backward when the child seat is at a free standing position. Always install the child seat on the vehicle seat before having the child sit in it.

⚠ WARNING The backrest of the child seat may swivel close or away from the child seat cushion. Please keep your fingers away for the potential pinch point when swivelling the child seat backrest.

⚠ DANGER Use on the rear seat: Move the front seat forward far enough that the child's feet cannot reach the backrest of the front seat as that is safer.

⚠ WARNING The rigid items and plastic parts of a Star-Fix shall be so located and installed that they are not liable, during everyday use of the vehicle, to become trapped by a movable seat or in a door of the vehicle.

⚠ CAUTION The vehicle seats may show signs of wear and tear when using child seat. In order to avoid that, car seat protectors may be used.

⚠ DANGER Make sure all passengers are informed about how to release your child in case of emergency.

⚠ WARNING Make sure luggage or other objects are properly secured. Unsecured luggage may cause severe injuries to children and adults in case of accidents.

⚠ CAUTION Do not use any aggressive cleaning products, which may harm the construction material of the child seat.

⚠ DANGER AVOVA advises that child seats should not be bought or sold second-hand.

⚠ DANGER DO NOT use the child seat for longer than 12 years. Due to aging, the quality of the material may change.

⚠ WARNING DO NOT use at home. It's not designed for home use and can only be used in a vehicle.

⚠ DANGER If in doubt, consult either the child seat manufacturer or the retailer.

3 INSTALLATION GETTING READY

Remove the vehicle seat headrest or move it to the highest position so that it will not interfere with the child seat headrest 9 in the highest position.

AVOVA Star-Fix can be adjusted to any inclination of the vehicle seat as its backrest connects to the child seat cushion 7 by an articulated axis.

⚠ DANGER Please ensure the vehicle seat that has the child seat installed is in upright position if the vehicle seat is reclinable.

A. WITH VEHICLES WHICH HAVE ISOFIX ANCHORING POINTS.

Star-Fix can be installed forward-facing onto a vehicle's ISOFIX anchoring points with vehicle's 3-point belt, approved to UNECE Regulation No.16 or other. It is compatible with universal seating positions in vehicles. Please read your handbook.

1. Fit the ISOFIX insertion guides 13 to the vehicle's ISOFIX anchoring points 14.

⚠ CAUTION It is suggested to use ISOFIX insertion guides to help in the installation. They help to prevent damages to the vehicle seat. If the vehicle seat can be folded, remove the ISOFIX insertion guides before doing so.

2. Position Star-Fix child seat on the vehicle seat, leaving a distance to the vehicle seat backrest. While pulling and holding the ISOFIX release handle 6, pull out the ISOFIX connector 3 entirely then release the handle.

3. Adjust the child seat allowing the ISOFIX connectors 3 to the installed ISOFIX insertion guides. Push the child seat towards the vehicle seat and both ISOFIX connectors should be clicked and locked onto the ISOFIX anchoring points through the ISOFIX insertion guides.

⚠ DANGER The green signs must be visible on both ISOFIX indicator buttons 5 which indicates that the ISOFIX connectors are securely engaged to the ISOFIX anchoring points.

4. Push the child seat towards the vehicle seat as far back as possible while pulling and holding the ISOFIX release handle 6 until it rests against the vehicle seat backrest then release the handle.

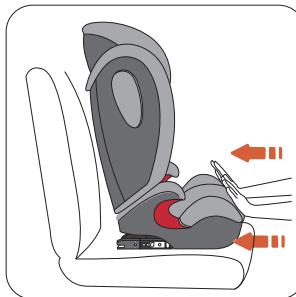
⚠ DANGER Make sure the child seat backrest ⑫ is touching the vehicle seat backrest and the vehicle seat headrest is not pushing the child seat away from the vehicle seat backrest. You may adjust or even remove the vehicle seat headrest if needed.

⚠ DANGER Please check that the child seat is connected securely by trying to pull it out on both sides.

⚠ DANGER Ensure both ISOFIX indicator buttons ⑤ are showing green signs after the installation

B. WITH VEHICLES WHICH DO NOT HAVE ISOFIX ANCHORING POINTS.

Star-Fix can be installed forward-facing with a vehicle's 3-point belt, approved to UNECE Regulation No.16 or other. It is compatible with universal seating positions in vehicles. Please read your vehicle handbook.

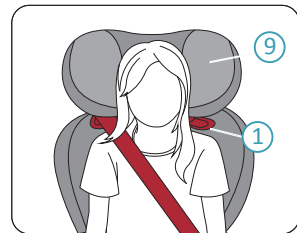


1. Position the Star-Fix child seat on the vehicle seat. Push the child seat towards the vehicle seat until it rests against the vehicle seat backrest.

2. Carry out the steps in "Positioning the child".

⚠ DANGER Please ensure the ISOFIX connectors ③ are fully stowed inside the seat in their fully retracted stowed position.

4 POSITIONING THE CHILD



1. Seat your child in the child seat.

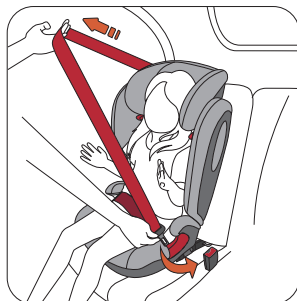
2. The headrest ⑨ shall be adjusted to a level that the shoulder belt guide ① is just above the child's shoulders.



3. Pull the headrest release handle ⑧ on the back of the headrest, this unlocks the headrest.

4. While pulling and holding the headrest release handle ⑧, move the unlocked headrest ⑨ to the desired height. Release the handle to lock the headrest into a desired position.

⚠ DANGER The child seat headrest will need to be adjusted from time to time as the child will grow. Child's shoulders should be just under the shoulder belt guide ①.

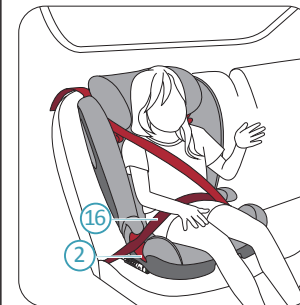


5. Position the vehicle 3-point belt in front of the child and lock the belt into the buckle of the vehicle with a click.

⚠ DANGER Make sure that the 3-point belt is not twisted.

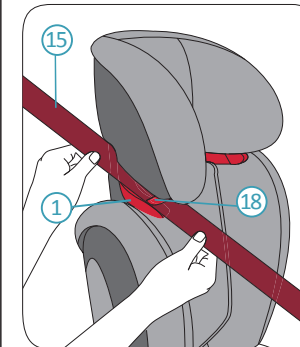


6. Place the shoulder belt section ⑮ and lap belt section ⑯ on the side of the vehicle seatbelt buckle ⑰ into the red color lap belt guide ② of the seat cushion ⑦.



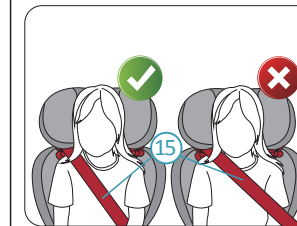
7. Place the lap belt section ⑯ on the other side of the seat cushion into the red lap belt guide ②.

⚠ DANGER The lap belt section ⑯ must lie as low as possible over the child's pelvis on both sides to provide the best protection.

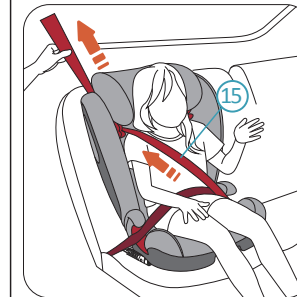


8. Route the shoulder belt ⑮ into the red shoulder belt guide ① of the headrest until it lies completely in the shoulder belt guide ① and lock key ⑱ is closed and shoulder belt section not twisted.

⚠ WARNING If the shoulder belt guide ① is concealed by the backrest ⑫, adjust the headrest ⑨ upwards to allow the shoulder belt section ⑮ can be inserted easily into the shoulder belt guide ① and then adjust the headrest ⑨ back to the correct height.



⚠ DANGER Check that the shoulder belt ⑮ runs over your child's collar-bone, not across his/her neck.



9. First pull the shoulder belt part that crosses the body of the child to remove the slack from lap section. Then pull the shoulder belt ⑮ part above the child seat to remove the remaining slack.

⚠ DANGER AFTER SECURING YOUR CHILD, PLEASE CHECK BELOW BEFORE YOUR TRAVEL:

1. The child seat is correctly secured. The lap belt ⑯ runs in the lap belt guide ② on both sides of the seat cushion ⑦.

2. The shoulder belt ⑮ runs in the lap belt guide ② on the side of vehicle's 3-point belt buckle ⑰ and the shoulder belt guide ① on the other side of the headrest ⑨.

3. The vehicle's 3-point belt is tight and not twisted. The 3-point belt buckle ⑰ must not be positioned in the lap belt guide ②.

5 REMOVAL

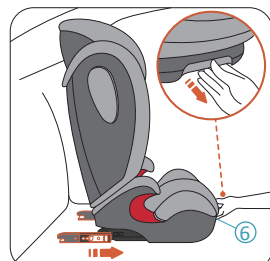
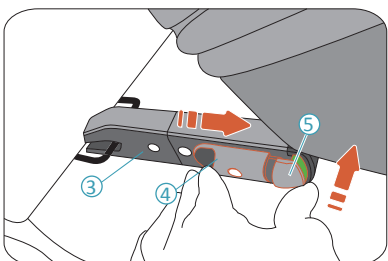
UNFASTENING THE CHILD:

Press the release button of the vehicle seat belt buckle to unfasten the child.

REMOVING THE CHILD SEAT :

1. Push the lock key ⑱ on the shoulder belt guide ① inwards and unthread the shoulder belt ⑮ from the shoulder belt guide ①.

2. Press the ISOFIX indicator button ⑤ and squeeze the ISOFIX locking button ④ to release the ISOFIX connector ③. This action needs to be done to release both ISOFIX connectors.



3. Pull and hold the ISOFIX release handle ⑥ and push the ISOFIX connectors ③ into the storage position under the seat cushion ⑦.

6 CARE AND MAINTENANCE

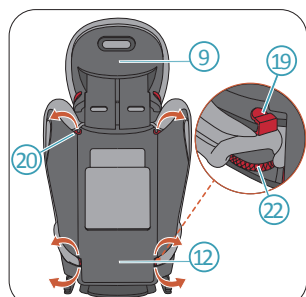
CARE AND MAINTENANCE

You may want to remove and wash the cover from time to time. Please do so with mild detergent in the delicates programme of the washing machine (30°C). Please refer to the washing label of the cover. The plastic parts can be cleaned with a mild soap and water.

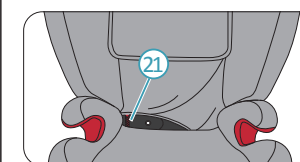
⚠ DANGER The child seat must not be used without the AVOVA seat cover. The cover is a safety feature and may only be replaced by an original AVOVA cover.

REMOVING AND REFITTING THE SEAT COVER

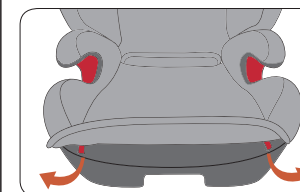
Remove the cover in the order of 1. Backrest cover. 2. Seat cushion cover and 3. Headrest cover. Please refit the cover in a reverse order.



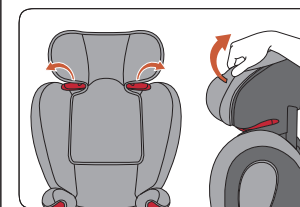
1. Adjust the headrest ⑨ to the highest position. Release the cover hooks ⑲ and the elastic bands ⑳ behind the backrest ⑫. Release the cover hooks ⑲ at the front side of the backrest. Then remove the backrest cover.



2. Release the cover elastic band ⑳ at the back of the seat cushion and release the cover hooks ⑲ at the front of the seat cushion. Then remove the seat cushion cover.



3. Pull out the trim of the headrest cover from the plastic part. Then release the loops behind the headrest cover.



7 WARRANTY

1. The warranty for AVOVA Star-Fix lasts for 2 years after the purchase. The usage of the product should be in accordance with this user manual. Any damage caused by operations against the instructions in this user manual will void the warranty.

2. Please keep your proof of purchase properly in case of a warranty claim.

3. Never use third parties for maintenance, repair or modification otherwise you will void the warranty. Always check with AVOVA retailers for advice.

If you have any further questions regarding the child seat's use, please feel free to contact us:

AVOVA GmbH
Blaubeurer Straße 71
89077 Ulm
Germany

T: +49 731 379941-0
info@avova-childcare.com
www.avova-childcare.com

8 DISPOSAL

When you need to dispose of the child seat, please refer to your local waste disposal regulations. If you have further questions, please contact your communal waste management or administration of your city.